



DIESEKO GROUP

Innovative Foundation
equipment

Welcome
to our world

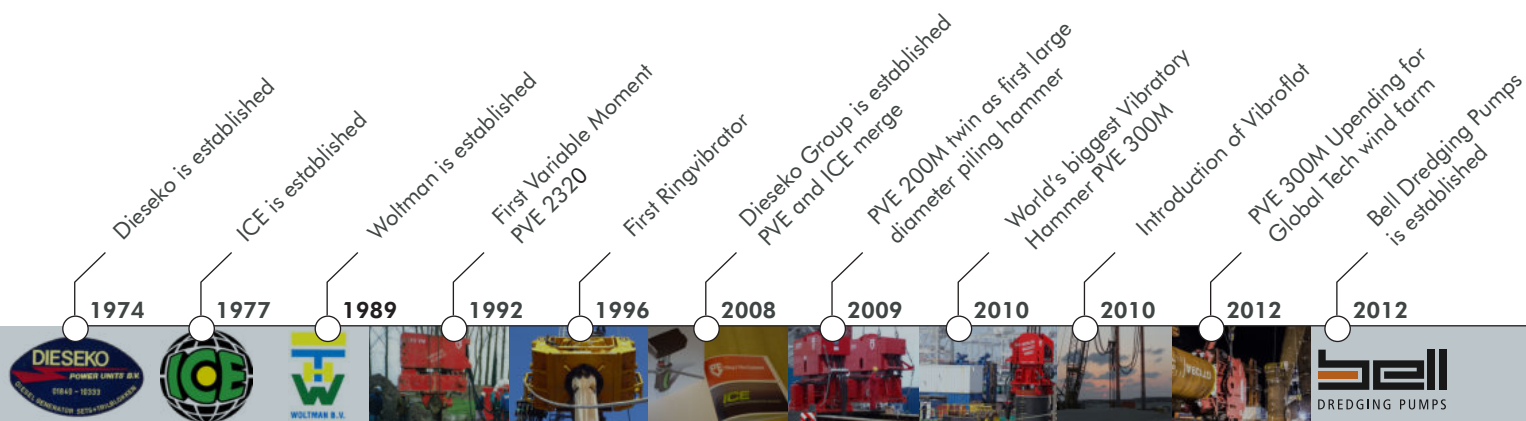


DIESEKOGROUP.COM

CONNECTING POWER: WELCOME TO DIESEKO GROUP

With four renowned brands, Dieseko Group represents powerful high-tech equipment for the global foundation industry. As part of the Dutch manufacturing industry, we are proud of our people, our brands and our customers who use our solutions in many applications. We also would like to invite you to share our heritage. For hundreds of years, the Dutch have been masters in reclaiming land and fighting water. And since 1974, Dieseko Group has contributed to developing foundation technology. We want to share that technology with others around the world in order to ensure that our clients get the best equipment available. That is our connecting power.

OUR HISTORY 45 years of Innovations





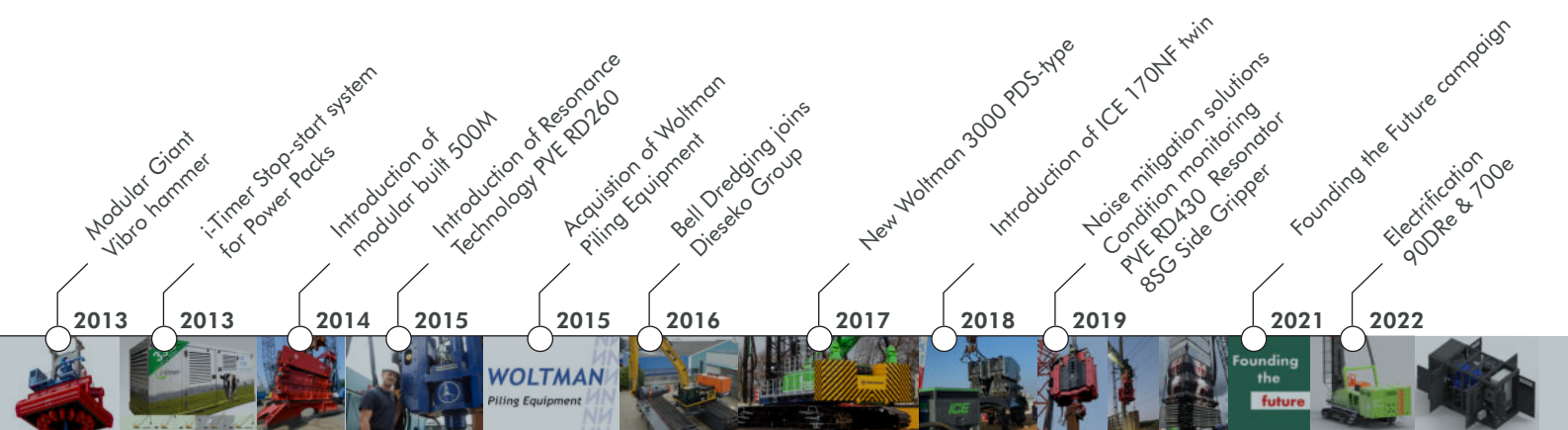
Innovative Foundation Equipment

Our vision is making our clients more successful worldwide through innovative foundation equipment and excellent service. The challenges in the field of foundation technology are to be able to work faster, less vibrations, quieter and more effectively. Increasingly, a critical environment or tightened regulations is the starting point for developing new solutions. Noise pollution, unwanted vibrations, safety and less energy consumption are the issues of our time. Dieseko Group wants to play a leading role in developing reliable solutions for all these issues.

In the field of foundation equipment, Dieseko Group offers a full range of piling and drilling and dredging technology. Our equipment is not only used for foundations in construction and civil projects, but also for near-shore and offshore in harbour, oil and gas and wind projects. With the brands PVE and ICE, Dieseko is the global market leader in hydraulic vibratory equipment. Woltman offers dedicated rigs for piling and drilling. And Bell is specialised in supplementary products, such as dredging pumps and amphibious excavators. Every brand has its heritage and is highly regarded in terms of quality, performance and reliability.

Game changing

With our Variable Moment technology, we offered a solution for urban piling in 1992. This was a game-changing technology. And today, we build world's largest VM vibratory hammer! Our newest game-changing innovation is resonance technology. As a vibration-free, sonic-frequency foundation machine, the Resonator heralds a whole new era for piling in the city and in sensitive areas. Looking to the future, Dieseko Group is now developing solutions with, for example, remote (diagnostic) monitoring and noise reduction solutions.



PVE: EXPLORE, IMPROVE

Expertise and experience is the heart of PVE. Always working in close collaboration with customers. And the R&D department works overtime to come up with new solutions. Innovation is the key here.

Low-vibration and vibration free piling

In 1992, the PVE Variable Moment vibratory hammers were a turning point in foundation engineering worldwide. A vibratory hammer with a variable eccentric moment that can be started and stopped without vibration. Safe for use in the urban environment and suitable for use with a telescopic crane. The completely vibration-free PVE pressing machines are also part of the portfolio.

Resonance technology

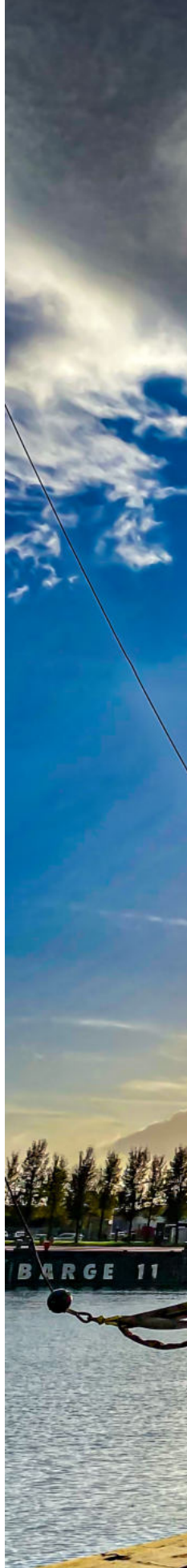
Our newest game-changing innovation is PVE resonance technology introduced in 2016. As a vibration-free, sonic-frequency foundation machine, the Resonator heralds a whole new era for piling in the city and in sensitive areas. PVE with its partners is continuously improving this technology and at Bauma 2019, the world's biggest Resonator ever will be introduced, the PVE RD430,

Size matters

The size and power of the PVE vibratory hammers were decisive when applying vibrating technology in the offshore (wind) market. In 2009, the PVE 300M was the largest vibratory hammer in the world. In 2013, this hammer was the first to be used as an upending tool on the successful Global Tech I wind farm. And today with a modular based system PVE is capable vibrating the largest diameter offshore foundation piles.

Your partner in development

PVE focuses on essential issues in the market: reducing vibrations, reducing noise pollution and reducing emissions. Worldwide, PVE has built up a respectable reputation over more than 30 years. The PVE machines are durably constructed and extremely reliable in terms of performance. And as such, they last a very long time and are value-fixed. An investment in PVE is more than just getting the best equipment available. It is also a conscious choice for sustainable and economically responsible business operations.





PVE: DUTCH MASTERS IN VIBRO TECHNOLOGY

PVE Piling & Vibro Equipment was founded in 1989 when, after years of maintenance and rental to other brands, Dieseko decided to start manufacturing vibratory hammers itself. The main reason was that Dieseko simply wanted to build better machines with all the knowledge it had gained.

PVE RENTAL
WWW.PVE-RENTAL.COM T: +31 184
SLIEDRECHT, THE NETHERLANDS
M&P-EX GY **DIESEKO**

ICE: THE STANDARD WORLDWIDE

ICE (International Construction Equipment) was founded in 1977 as an import company for American ICE machines. However, already in 1979, the first ICE machines were produced in the Netherlands. Independent of ICE Inc., and with dedicated focus on the highest quality standards, the world was then open to the Dutch ICE. In 2008, ICE became part of Dieseko Group.



Over the past 40 years, thousands of vibratory hammers have been used all over the world and the brand has a number of iconic types to its name. The best known are the ICE 1412 and the ICE 815. More than 500 have been produced of this last model alone! In the Middle East, Asia and China, the "815" is a household name and has been the best-selling vibrator in its segment for years.

ICE equipment has really been further developed and is known for its reliability and durability. Extensive standardisation has taken place in recent decades, which means that maintenance and the replacement of parts is a routine job for many users. And that is precisely the idea for which the ICE equipment was developed. An extremely reliable "standard" piece of equipment, with a short delivery time and able to be maintained in the field. And with a worldwide dealer network, you have the guarantee of warranty, savings and service everywhere.

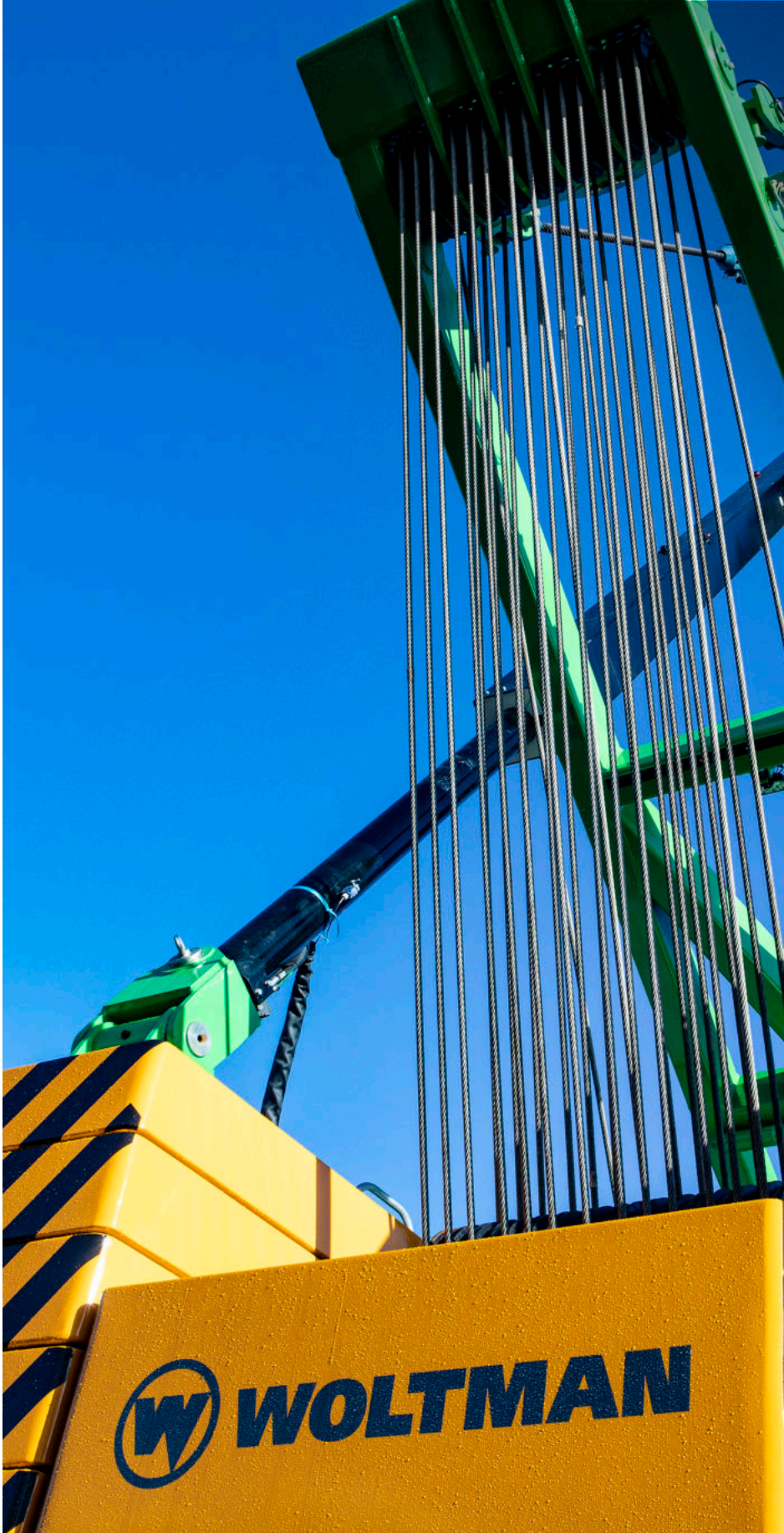
Equipment.

The hydraulic power packs are all built on the same principle and with premium parts. The construction of the skid begins with the fuel tank. With a bottom that is enclosed, the CAT and Volvo engines and pumps remain clean. And with louvers that also muffle sound and an easily accessible engine compartment, this is a power pack as it should be.

The extensive range of excavator mounted vibratory hammers is also world famous. High frequency, resonance-free and with a swivel head, this is the most agile piece of equipment we offer. Every contractor can also use ICE vibration technology with the excavator in limited height circumstances.

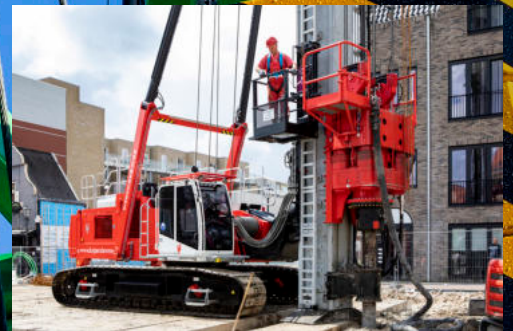
ICE developed the Vibroflot for ground improvement. After years of development, ICE offers a modularly constructed Vibroflot that is becoming the new standard worldwide. Suitable for both top and bottom feeding and for compaction.





Customer requirements

At Woltman, it is important to realise that the operator is the end user. Just as in the early years, the development phase, together with the client and the operator, looks at optimum alignment with the needs of the market. Customers use Woltman rigs for installing foundations for commercial and industrial construction, as well as for the development and expansion of harbours and in civil projects.



WOLTMAN: BUILT ON EXPERIENCE

Woltman Foundation Rigs are well known in the Benelux. Since 2016, Woltman has been part of Dieseko Group. This well-respected brand, founded in the Netherlands, is ready to conquer the world.

Woltman was founded in 1989 by Jaap Woltman, together with his sons Hans and Henk. Jaap had been self-employed since 1968 and mainly active in dragline rental. Besides this, Jaap himself modified, repaired and overhauled cranes and excavators, and as a result, the first contacts with the foundation world were established. The 'Woltmen' delivered their first 40-ton pile-driving rig in 1995. Three years later, a 160-tonnes special rig was built. Again based on a sketch and a lot of experience.

Woltman machines are a popular product due to their very high quality as well as the good image the Netherlands has abroad. Dutch customers are demanding and critical. They have increasingly raised the bar, because construction times are short and the hourly rate is high. The Woltman foundation machines perform excellently. Durable, reliable, easy to maintain and, above all, very stable and robust.

Fast and agile

Woltman machines have a unique quick erection system for the mast. Every machine can be operational within half an hour. This makes transport easy and the machine can always be used quickly. Strength and stability is an important USP. By using high-quality components, good reliability is achieved and the machines perform optimally.

Safety

Safety on the construction site is paramount. Woltman rigs meet the CE mark and the machines are equipped with all the safety features required today. Think of cameras and acoustic signals when driving and swivelling the machine.



BELL DREDGING PUMPS: INTERNATIONAL DREDGING SPECIALIST

In 2012, Leon van der Bel established Bell Dredging Pumps after years of contracting and experience in the dredging, construction and demolition & salvage sectors.

Using the knowledge gained while operating all kinds of dredge pumps, cutter suction dredgers, amphibious excavators and affiliated equipment. This resulted in a superior product range, which is engineered and manufactured at the Bell yard in Winkel, The Netherlands. The focus started on dredge pumps and suction heads, but soon expanded to power packs, booster stations, process instrumentation and complete cutter dredgers and amphibious excavators up to 45 tons.

In 2016, Bell Dredging Pumps joined Dieseko Group. Together they can now offer complementary solutions and extend the product range for the foundation and dredging industries.

Bell is the all-round solution provider as it not only manufactures dredging equipment but also supports all its customers with project management and operators on the project job site.

WWW.BELLDREDGINGPUMPS.COM



Innovative, fresh view

Due to Bell's innovative, fresh view within the industry, it was able to develop a complete new range of dredge pumps with new suction-and cutter heads, as well as cutter suction dredgers and amphibious excavators.

Future-proof

With the manufacturing and supply of remote-controlled booster stations, power packs and amphibious excavators, it is creating future-proof solutions for all its customers.

One of the new developments is production instrumentation with non-nuclear density measurement, which can be used and transported all over the world without the need for permits or specially qualified operators. Due to the online connection with the BELL app, real time production can be read out all over the world to monitor the progress of the project.

Another innovation is the Bell Double Cutter Head. A time saving solution for emptying foundation piles and cofferdams.

Bell offers a wide range of dredging equipment and has the experience and knowledge to create dredge equipment for a sustainable future.



Global Coverage

Dieseko Group is a global company with an average of 200 employees and five branches in China, USA, Australia, Brazil, Poland and The Netherlands. From our headquarters in the Netherlands, we serve the world market through an extensive dealer network. Our services include sale, rental, training, technical support, maintenance, overhaul and repair.

NPM Capital is the major shareholder in Dieseko Group. Our core values are honesty, integrity and respect and, as business partner, we set high standards of performance and compliance.

Dieseko Group B.V. (headquarters)

Lelystraat 49
3364 AH Sliedrecht, The Netherlands
Tel: (+31) 184 410 333
info@diesekogroup.com
www.diesekogroup.com

Woltman Piling & Drilling Rigs

Ambachtsweg 16
3381 LN Giessenburg, The Netherlands
Tel: (+31) 184-652044
info@woltmanrigs.com
www.woltmanrigs.com

Dieseko Polska Spółka z o.o.

Struga 61
70-784 Szczecin, Poland
Tel: +48 736 241 696
polska@diesekogroup.com
www.diesekogroup.com

PVE Equipment USA Inc.

5011 Vernon Road
Jacksonville, FL 32209, USA
Tel: (+1) 904 765 66 86
info@pveusa.com
www.pveusa.com

Pilequip Pty. Ltd.

39 Chapman Road
Vineyard NSW 2765, Australia
Tel: +61 2 9838 3144
info@pilequip.com.au
www.pilequip.com.au

Shanghai ICE

Construction Equipment Trading Company

No.88, Building 31,
ChuanSha International Industrial Garden,
6999 ChuanSha Road, PuDong District,
201202 Shanghai, P.R. China
Tel: (+86) 21 3468 8990
info@icevibro.com
www.icevibro.com