



Specialized foundation equipment

WOLTMAN PILING & DRILLING RIGS
WITH PVE ATTACHMENTS



WOLTMAN
woltmanrigs.com

DIESEKO GROUP

Dieseko Group Foundation equipment

Dieseko Group, established in 1974, manufactures a wide range of products for the foundation industry. The range is divided into five product lines: vibratory hammers and impact hammers, piling and drilling rigs, soil improvement equipment, dredging equipment, and hydraulic power packs.

Dieseko Group is the parent company of three brands that specialize in constructing and infrastructural applications for foundations: PVE Piling & Vibro Equipment, PVE International Construction Equipment, and Woltman Piling & Drilling Rigs. Their experienced engineers have extensive knowledge of customer needs in the constructing and infrastructural markets and focus on delivering high-quality and reliable products. In addition, service engineers are available 24/7 to assist clients on-site. With over 60 dealers and branches worldwide, Dieseko Group is the perfect partner for foundation contractors seeking consultation, sales, rental, and financing services.

Woltman Piling & Drilling Rigs

Woltman Foundation Rigs Woltman specializes in manufacturing foundation machines and attachments. Since 2016, Woltman has been part of Dieseko Group.

Dieseko Group: Founding the Future!

With a sustainable future in mind and, to contribute to emission-free construction sites in 2030, Dieseko focuses on the development of sustainable foundation equipment. Our 'Founding the Future' vision and innovative solutions make us a pioneer in a market where many developments lie ahead. We have entered partnerships with several specialist parties. For example, we combine our expertise in foundation equipment with partners in the field of electrification and battery technology.



Noise
reduction



Low-vibration or
vibration-free



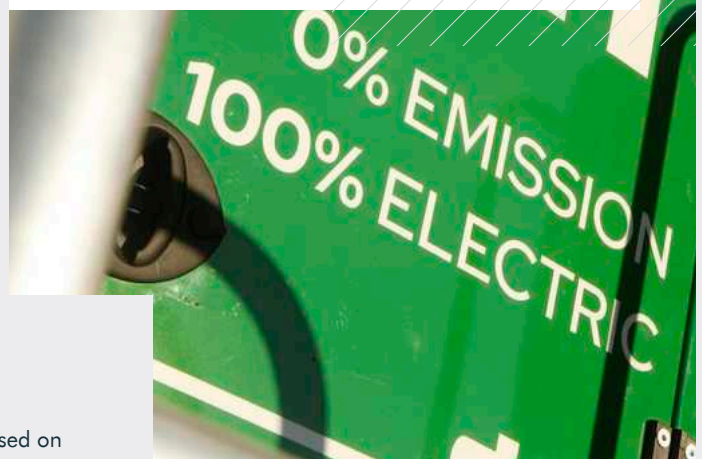
Zero
emission



Remote
services



Renewable
energy



DIESEKO
GROUP

Founding the Future

Our innovation strategy is based on 5 pillars.

A large yellow and black Woltman Piling & Drilling Rig is shown at a construction site. The rig has a yellow cab with a large window, and a black frame with various mechanical components. A large coil of grey cable is visible on the right side. The rig is mounted on a black base with tracks or wheels. The background shows a construction site with a concrete wall and some scaffolding.

Woltman Piling & Drilling Rigs

Woltman Piling & Drilling Rigs

Our customers value the Woltman for its high production speed and ability to work on various construction sites due to its relatively low weight. A Woltman foundation rig is known for its favorable weight-performance ratio, intuitive operation, and intelligent yet simple design, making it a favorite of both operators and maintenance departments. These rigs can be supplied in various configurations and can even be customized to meet specific customer requirements.

Woltman specializes in manufacturing foundation machines and attachments and since 2016, Woltman has been part of Dieseko Group.



A perfect fit for the most demanding jobs

The Woltman rigs have been specifically designed for drilling and piling operations, making them stand out from other machines available in the market. The decades of experience in the foundation market have been thoroughly incorporated into the in-house development and design of these rigs, making them unique and highly efficient. The high efficiency of Woltman Piling & Drilling Rigs is achieved by its reliability and high standard materials and parts such as powerful engines and smart hydraulic systems.

Excellent stability and high performance

Our customers value the Woltman for its stability, high production speed and ability to work on various construction sites due to its relatively low weight. A Woltman foundation rig is known for its favorable weight-performance ratio, intuitive operation, and intelligent yet simple design, making it a favorite of both operators and maintenance departments.

High mobility increasing cost effectiveness

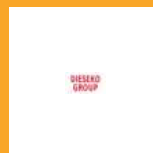
The compact size of the of the smaller range of Woltman Piling and Drilling rigs enables the machines to work in areas with limited access. Their excellent mobility enables our clients to minimize mobilization and demobilization as the compact rigs are erected and lowered in only minutes. The rigs are equipped with a self-erecting leader which reduces the time of assembly considerably.

“The rigs are designed in such a way that they can be easily operated and serviced in an efficient and safe way”

The PDS-type rigs can be used onshore but also near-shore on a barge or pontoon. Woltman offers different models of which the smaller PDS-types are still easy to transport by a low-boy trailer. The largest PDS is designed more specifically to work permanently from a barge or ship for near-shore and harbor works. Excellent stability ensures suitability for every jobsite. The Woltman rigs are designed with a wide undercarriage and low center of gravity which provides high stability and makes the piling rigs suitable for every jobsite.

High efficiency by reliability

The high efficiency of Woltman piling rigs is achieved by the powerful engine and hydraulic system. Woltman only uses top quality parts for its rigs such as Caterpillar engines and Bosch Rexroth hydraulic pumps and parts.



**Woltman
Piling & Drilling Rigs**

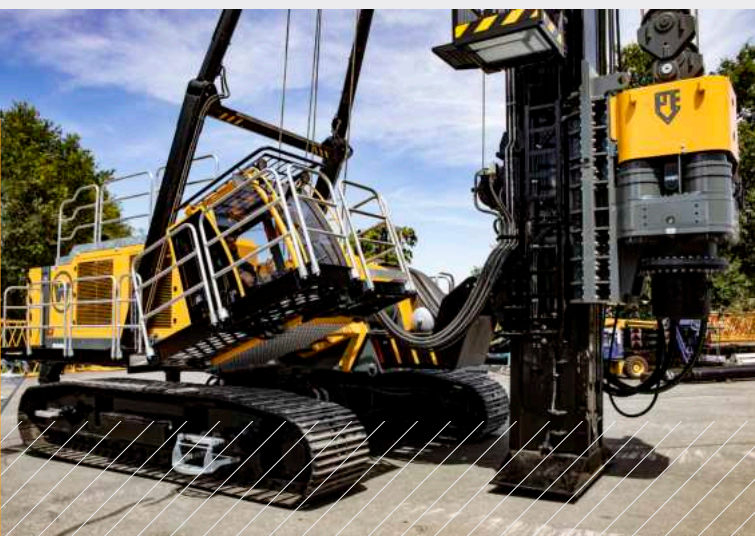
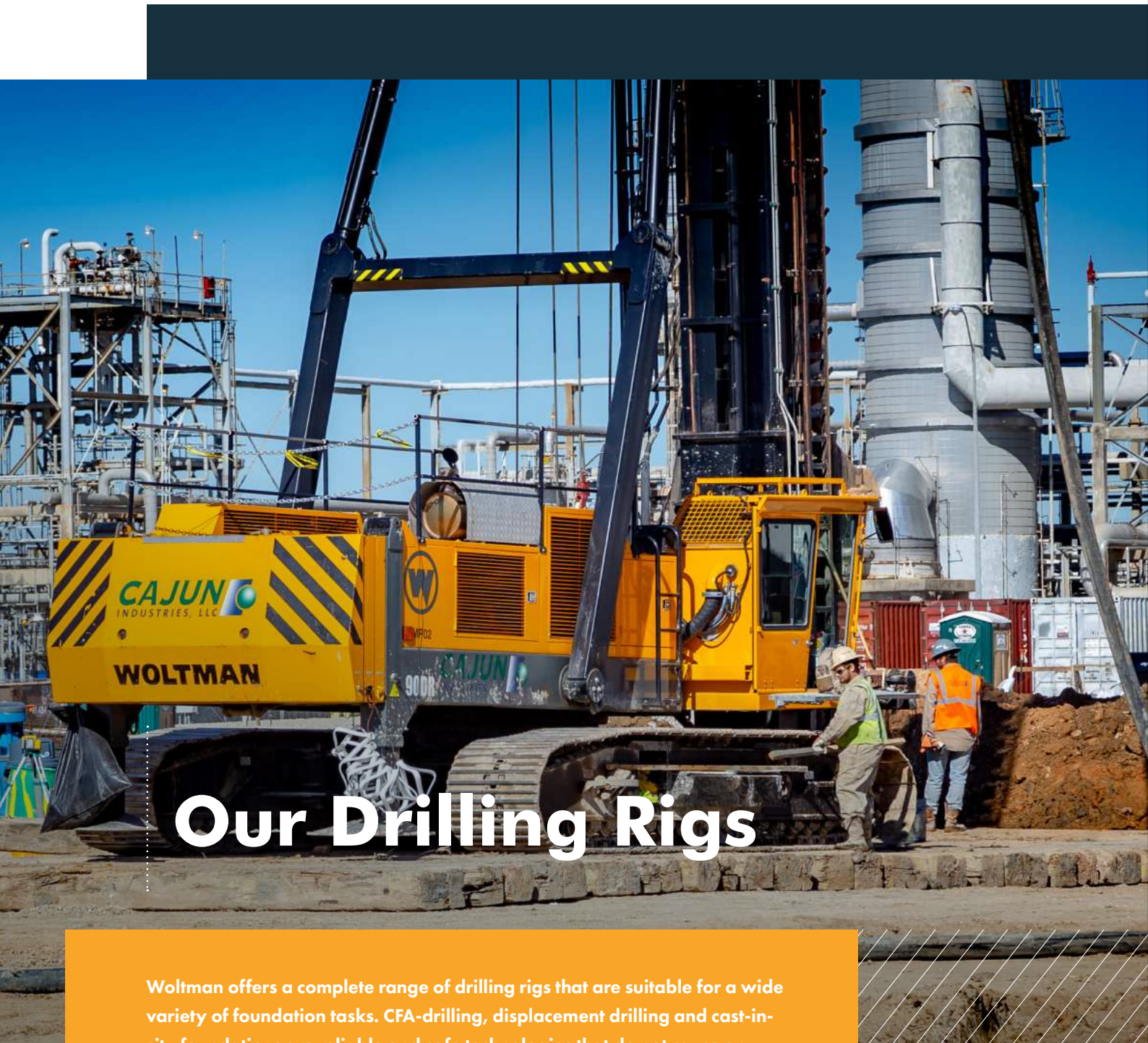


Table of contents

The Dieseko Group	02
Woltman	03
Piling and drilling rigs	06
Hydraulic rotary heads	14
Contact	20



Our Drilling Rigs

Woltman offers a complete range of drilling rigs that are suitable for a wide variety of foundation tasks. CFA-drilling, displacement drilling and cast-in-situ foundations are reliable and safe technologies that do not cause any ground distortion. This makes our drilling rigs ideal for use in sensitive or vulnerable environments.

6 reasons to choose a Woltman Rig

- Designed for the job
- High mobility increasing cost effectiveness
- Excellent stability ensures suitability for every jobsite
- High efficiency by reliability
- In house manufactured accessories
- Woltman's long experience and wide product range

Applications drilling and piling rigs

- Timber piles
- Steel caisson piles and beams
- Sheet piles
- Prefabricated concrete piles
- Cast-in-situ concrete piles
- CFA-drilling
- Vibro replacement drilling

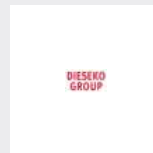
Features

The Woltman drilling rigs come with a powerful engine that works in tandem with a special hydraulic system to power the rotary head directly. These rigs boast exceptional mobility and can be mobilized and erected in a very short amount of time. They are particularly suitable for use in urban areas and job sites that are difficult to access.

The Woltman drilling rigs can be equipped with rotary heads from 80 kNm up to several high torque rotary heads providing a maximum torque of 500 kNm (50 ton/meter). Our drilling rigs feature a pull-down system that adjusts to drill resistance, improving control of drilling operations.

As the Woltman drilling rigs are equipped with powerful high performance engines and high torque resistant leaders they are also perfect to use as multi-purpose rigs. They can also be equipped to perform several foundation and ground improvement applications e.g. vibrating, impact hammering, and sheetpile pressurizing with our pressing machines.

“ Woltman piling and drilling rigs are incredibly versatile due to their ability to be equipped with a wide range of accessories, that are manufactured in-house by Woltman. These accessories include impact hammers, vibratory hammers, rotary heads, ring vibrators, vibroflots, resonators, pressing machines, power packs and much more. By manufacturing all accessories in-house, the ideal and most dependable configuration can be achieved for each job”

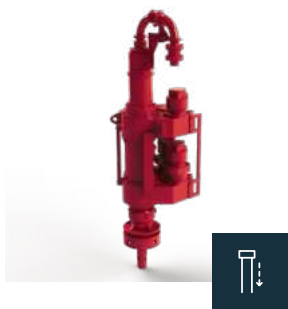


Piling & Drilling Rigs

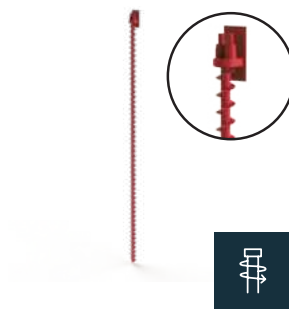
Woltman Piling & Drilling Rigs is a specialist when it comes to foundation and ground improvement equipment.

various rig attachments

Double rotary drilling



CFA drilling



Impact hammer



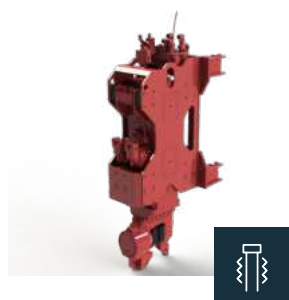
Pressing machine



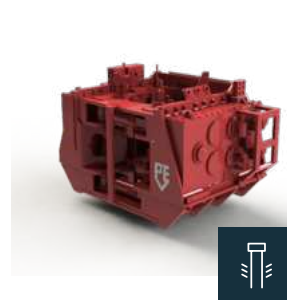
Vibratory hammer



Liniair vibratory hammer



Ring vibrator



Resonator

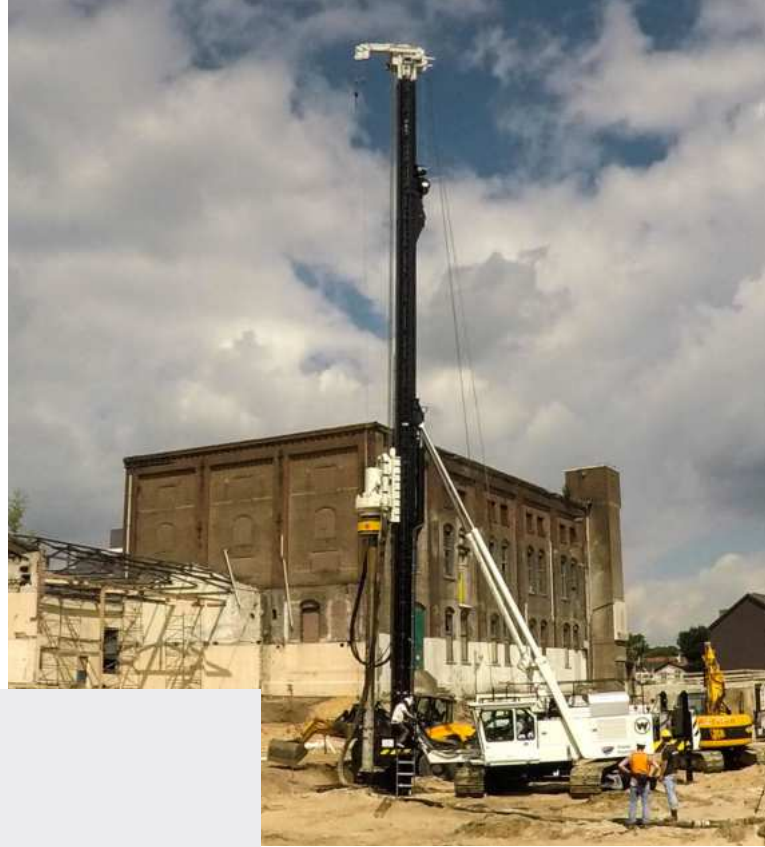


Product range

Drilling Rigs

Woltman Drilling Rigs rigs are specially designed for high torque drilling methods as displacement drilling and big diameter CFA.

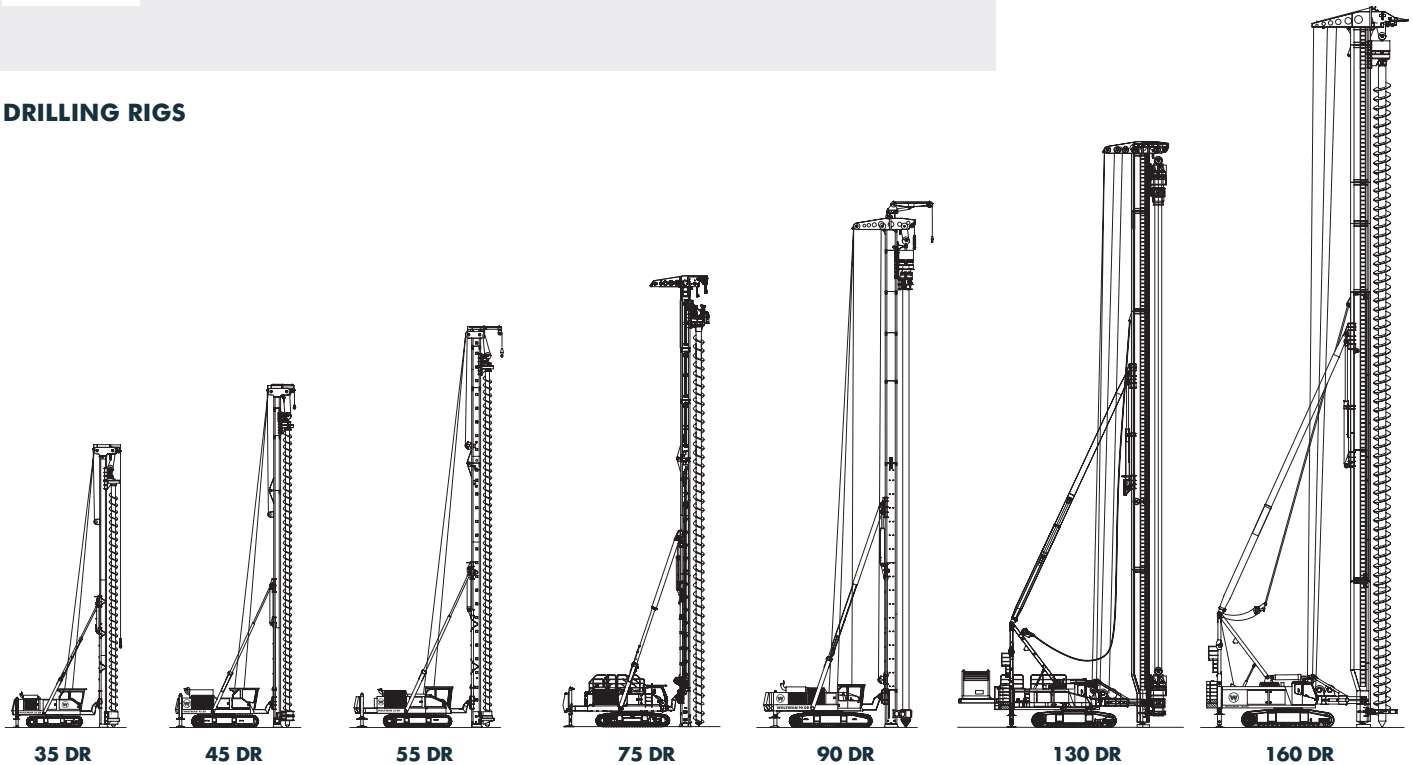
- No excavator or crawler crane is used as undercarriage which has made it possible to guarantee the highest possible stability and low centre point of gravity.
- All Woltman rigs have a solid and strong undercarriage which is hydraulically extendable and is fitted with wide track plates.
- The winches of the Drilling rigs are fully synchronized in pull-up and pull-down operation.
- Lots of accessories available to enable multipurpose operation.



Drilling Rigs

More information can be found on our website.

DRILLING RIGS



	Standard Leader Length m	Max. Leader Length m	Max. Weight for Rotary + Auger ton	Emission Regulation	Max. Torque ton/m	Max. Drill Depth m	Max. Pull Up ton	Max. Pull Down ton	Capacity of Aux. Winch ton	Engine Output kW/HP	Operational Width mm	Transport Width mm	Operational Weight incl. Rotary Head ton	Recommended Rotary Head PVE	Transport Weight incl. Rotary Head ton	Max. Oil Flow l/min	Stroke Sliding Brace mm
35 DR	16.5	19,5	5,9	Stage V	8	15 (17)	30	5	3	205/275	3600	3000	35	RH-8	35	260	1500
45 DR	21,8	24,8	8,6	Stage V	15	19 (22)	40	6	3	305/415	4100	3300	54	RH-15	54	520	1500
55 DR	25,1	28,1	8,5	Stage V	25	22 (25)	50	25	4	350/475	4400	3450	63	RH-25	63	520	1500
75 DR	25,1	34,1	13	Stage V	35	23 (29)	75	25	8	563/762	4800	3450	75	RH-35	75	600	1500
90 DR	30	36	33	Stage V	50	26 (32)	100	30	18	563/762	4800	3500	102	RH-45-HS	71	800	1500
130 DR	42	46	42	Stage V	50	38 (42)	100	40	20	305/415	4900	3450	140	RH-45-HS	85	350	1100
160 DR	51	56	60	Stage V	50	47 (52)	120	40	20	305/415	5300	3750	176	RH-45-HS	82	350	1100



ZERO EMISSION WOLTMAN 90DRe

The Woltman 90DRe is the first zero-emission Drilling Rig in its class for building sites with the most stringent emission regulations.

This drilling rig was developed after intensive market research and a unique starting point here is electrification based on capacity demand. The varying energy requirements have been optimized using two electric PM-motors, in combination with two battery units. As a result, the Woltman 90DRe is energy efficient and extremely powerful when needed.



Woltman 90DRe

More information can be found on our website.



90DRe

"This unique emission-free high power Drilling Rig provides a real USP when bidding in foundation projects with most stringent emission regulations"

Piling & PDS type rigs

Piling rigs

The purpose-built Woltman Piling Rigs are specially designed to drive piles.

- A thoughtful design, equipped with the most modern measurement tools and accessories
- The undercarriage guarantees the highest possible stability and a very low centre of gravity.
- The solid and strong undercarriage is hydraulically extendable and is fitted with wide track plates.
- The winches of the Woltman machines are synchronized in a sophisticated way to ensure the most efficient pile driving operation.

PDS Piling Rigs

Woltman offers heavy pile driving machines that can be used as a regular lifting crane as well. The unique design requires a lot less working space compared to conventional crawler cranes with a hanging leader. The range starts at 100 tons class up to 300 tons.

- All PDS rigs have a patented design which offers the perfect solution for projects in which pile driving and lifting work are combined. The PDS rigs can be used as a normal HD-crawler crane or as a pile driver with leader lengths up to 60 meters.
- With help of the outriggers that are mounted to the rear of the boom of the crane, bigger rake positions are achieved and less working space is required compared to traditional pile driving installations.
- The PDS machines can be used onshore but also offshore on a barge or pontoon.



Piling Rigs

More information can be found on our website.

PILING RIGS

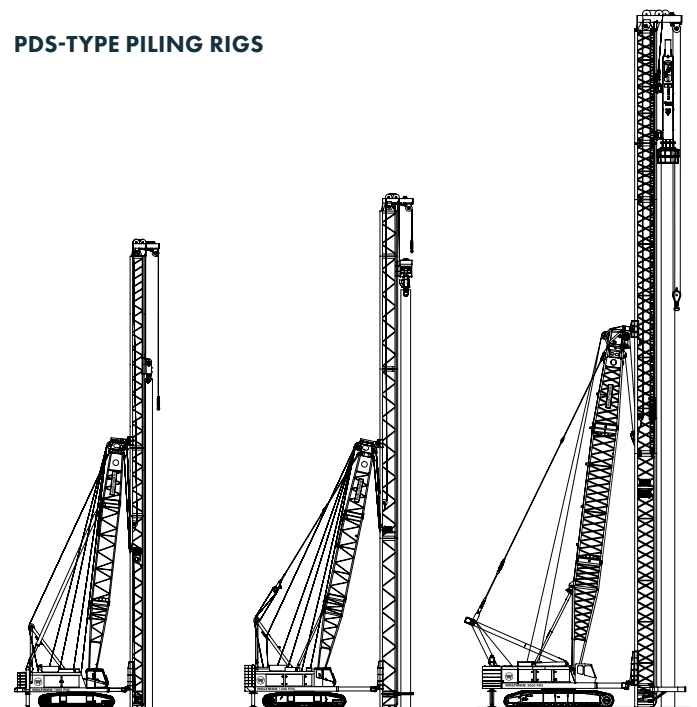


30 PR-FF

40 PR-FF

50 PR-FF

PDS-TYPE PILING RIGS



PDS 1000

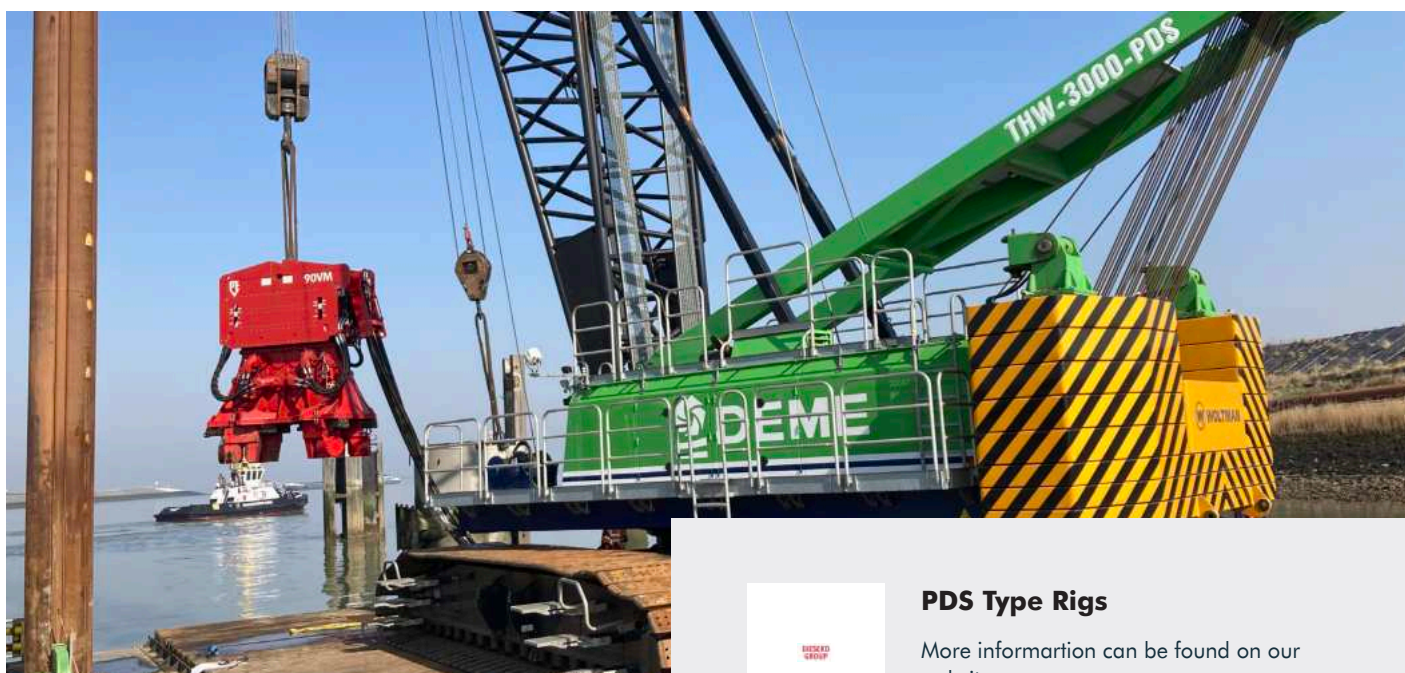
PDS 1200

PDS 3000

	Standard Leader Length m	Max. Leader Length m	Max. Weight for Hammer + Pile ton	Max. Pile Length m	Emission Regulation	Hammer Winch ton	Pile Winch ton	Capacity of Aux. Winch ton	Engine Output kW/HP	Operational Weight incl. Hammer ton	Recommended Impact Hammer PVE	Transport Weight incl. Impact Hammer ton	Max. Oil Flow l/min	Transport Weight excl. Hammer ton
30 PR-FF	16,5	19,5	10	13 (16)	Stage V	7	6	3	183/250	36	3NL(S)	36	260	30
40 PR-FF	21,8	24,8	13	17 (20)	Stage V	10	7	3	183/250	48	4NL	48	390	40
50 PR-FF	24,8	27,8	18,5	21 (24)	Stage V	14	10	4	183/250	62	5/7 NL	62	390	51

	Max. Pile & Hammer Weight ton	Max. Lifting Capacity at 4.2 m ton	Standard Boom length m	Standard Leader length m	Emission Regulation	Capacity Main Winches ton	Capacity Auxiliary Winch ton	Output Diesel Engine kW/HP	Transport Width mm	Transport Length mm	Transport Height mm	Transport Weight mm
PDS 1000	37	100	42	40	Stage V	15	6	305/415	3.500	14.625	3.500	78
PDS 1200	48	120	42	40	Stage V	15	7,5	305/415	4.110	15.900	3.500	71
PDS 3000	100	300	62	60	Stage V	20	15	350/475	4.820	12.500	3.700	98

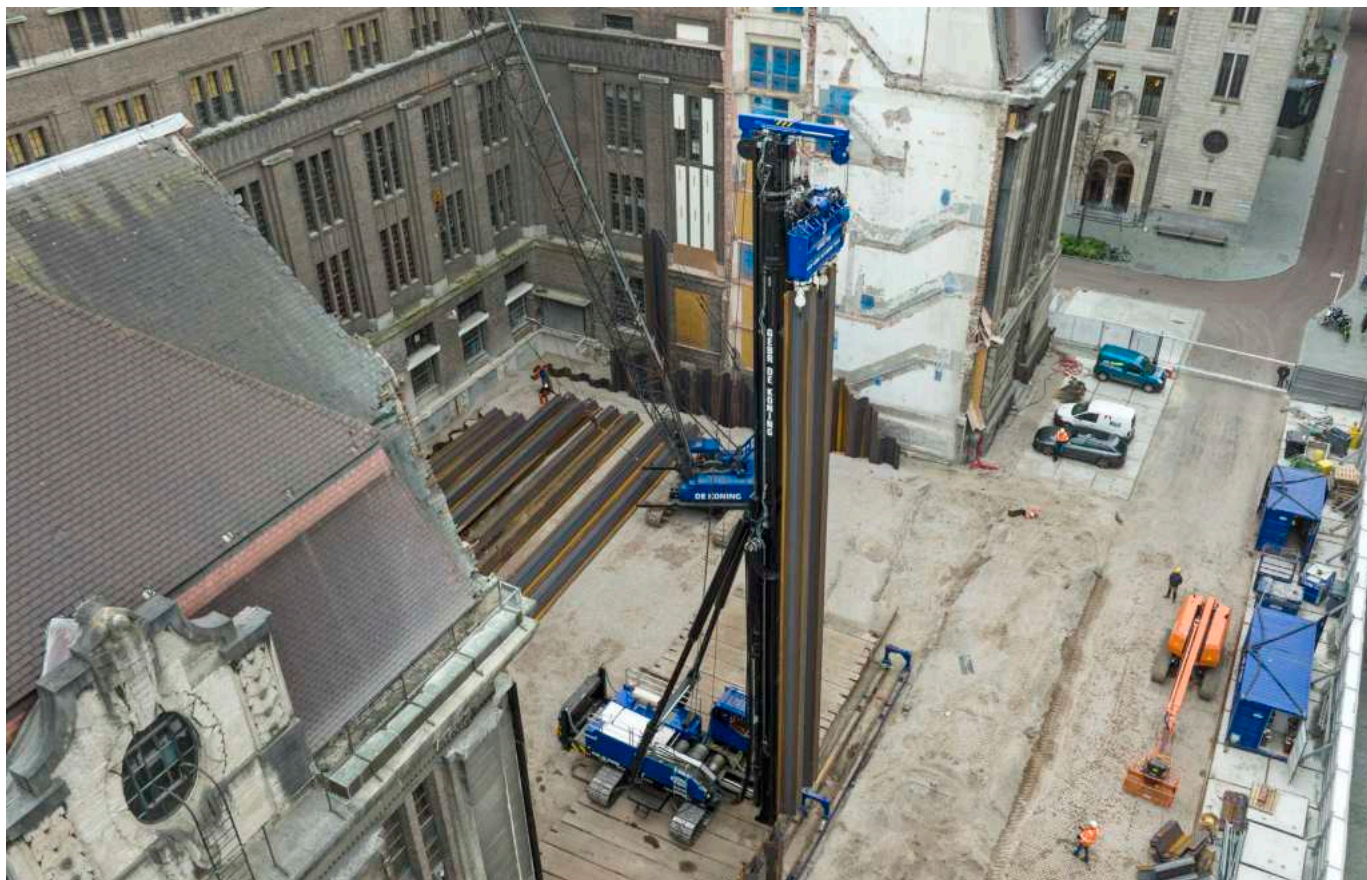
*) this machine can be transported in different configurations, detailed packing lists are available.



PDS Type Rigs

More information can be found on our website.

Vibratory & pressing rigs



VIBRATORY RIG

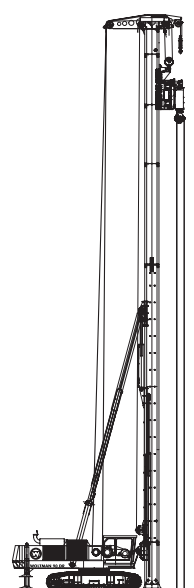
SHEET PILE PRESSING RIGS



55 VR



55 SPP



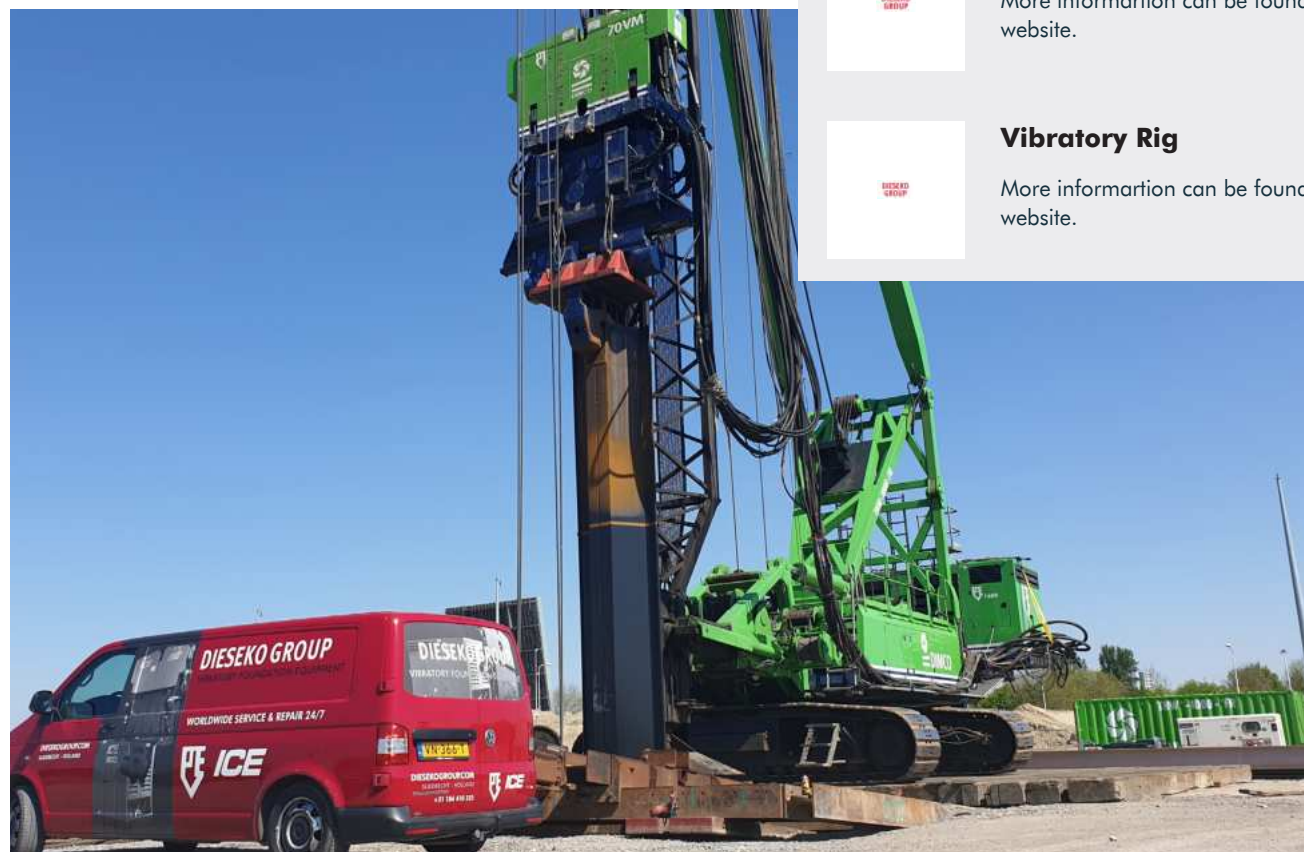
90 SPP



	Standard Leader Length m	Max. Weight Vibratory Hammer + Pile ton	Emission Regulation	Capacity Main Winches ton	Capacity Pull Down Winches ton	Capacity of Aux. Winch ton	Engine Output kW/HP	Operational Weight excl. Hammer ton	Recommended Vibratory Hammer PVE	Transport Weight incl. Vibratory Hammer ton
55 VR	25,4	15	Stage V	15	10	4	563/762	59	23VML	64

	Standard Leader Length m	Max. Leader Length m	Max. Weight Pressing Machine + Sheet Piles ton	Emission Regulation	Capacity Main Winches ton	Capacity Pile Winches ton	Capacity of Aux. Winch ton	Engine Output kW/HP	Operational Weight excl. Hammer ton	Recommended Pressing Machine PVE	Transport Weight incl. Pressing Machine ton	Max. TPressure Force ton	Max. Torque on Leader ton/m	Max. Oil Flow l/min
55 SPP	20,75	24,75	15	Stage V	75	25	10	350/475	63	4240	65	240	25	520
90 SPP	30,0	36,0	30	Stage V	100	30	10	563/762	92	4240	85	240	50	800

*) this machine can be transported in different configurations, detailed packing lists are available.



Sheet Pile Pressing Rigs

More information can be found on our website.

Vibratory Rig

More information can be found on our website.



Hydraulic rotary heads

Every project is unique and has its own foundation requirements. Several vibration free drilled pile systems are available in the market. For this reason PVE offers a wide range of rotary heads suitable for traditional drilled piling systems like Continuous Flight Auger (CFA) piles up to state of the art drilled cast-in-situ soil displacement piles.

Experience the advantage of PVE rotary heads

CFA Drilling

Continuous Flight Auger (CFA) piling is a fast and sound proof piling system. An auger driven by the rotary head is drilled to the required pile tip depth while transporting soil to the work surface. After the required pile depth is reached concrete is pumped through the rotary head in the hollow shaft of the auger. During concreting the auger then is extracted and the drilled shaft is filled with concrete. PVE also supplies Woltman crawler mounted concrete pumps to support your CFA piling operations.

Double Rotary drilling

Double rotary drilling is actually a CFA pile where the CFA auger is separated from the soil by an outer casing. Both auger and outer caisson are driven by independent rotary heads in counter rotation. The two independent rotary drivers are coupled to each other to ensure simultaneous lowering and lifting of auger and casing. Double rotary drilling is often used for secant piling or contiguous piles for shoring purposes.



Full displacement Drilling

Drilling cast-in-situ soil displacement piles has the advantage of relatively high bearing capacities without soil coming to the surface. A drill shaft with a special pile nose pushes the soil sideways into the surrounding layers. After reaching the required pile depth, the casing is filled with concrete and rebar. The drill shaft then is ready for extraction, leaving the drill nose behind and a smooth and strong reinforced pile is formed. The described drilling operation can also be performed while injecting grout through a nozzle in the drill shaft and pile nose.

Benefits

- Wide range of PVE rotary heads for every job
- PVE rotary heads are suitable for multiple piling systems
- High quality resulting in cost efficient pile drilling
- Designed to perform pile drilling close to adjacent buildings
- Long pile lengths are possible with pile casing clamping system
- Safe CFA drilling with auger cleaner

Rotary Heads

Efficient pile driving operations and high production rates.

DIESEKO GROUP

Suitable cranes for drill & rotary head applications



Crawler crane



Boom crane



Multi purpose rig



PDS rig



Excavator

Rotary heads for drilling

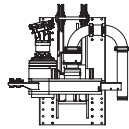
With a complete range of rotary heads PVE offers a solution for several drilled pile systems. From small compact rotary heads suitable for pre-drilling and CFA piles up to large high torque rotary heads for large diameter CFA piles and of course drilled soil displacement piles. In case your drilling rig needs more power to perform pile drilling, PVE manufactures and supplies power packs which are very suitable to power hydraulic rotary heads, when the power and hydraulic system of the drilling rig are not sufficient.



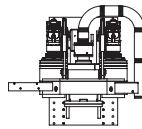
HYDRAULIC ROTARY HEADS



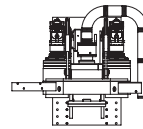
RH-4



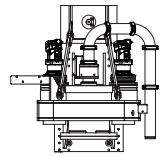
RH-8



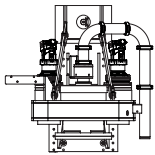
RH-15



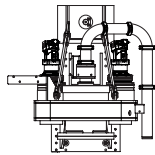
RH-20-HS



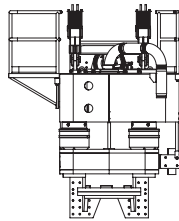
RH-25



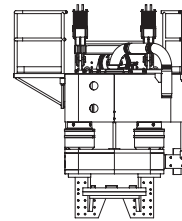
RH-25-HS



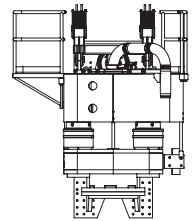
RH-35



RH-40-HS



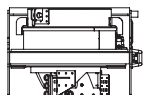
RH-45-HS



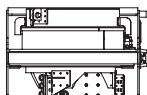
RH-50

	Maximum torque ton/m	Maximum speed rpm	Maximum shaft diameter mm	Maximum pressure bar	Maximum oilflow l/min	Height mm	Depth mm	Width mm	Weight indication kg
RH-4	3,2	0 - 35	No shaft	350	260	1313	595	550	500
RH-8	8	0 - 40	340	300	350	1575	1080	1115	2400
RH-15	15	0 - 30	340	325	520	1575	1058	1281	3400
RH-20-HS	20	0 - 30	500	350	520	1575	1171	1500	4500
RH-25	25	0 - 24	500	350	610	1575	1171	1500	5500
RH-25-HS	25	0 - 30	500	350	800	1575	1171	1500	6500
RH-35	30	0 - 28	500	350	800	1575	1171	1500	7500
RH-40-HS	40	0 - 26	600	350	800	2220	1150	1740	9500
RH-45-HS	45	0 - 22	600	350	800	2220	1150	1740	9500
RH-50	50	0 - 16	600	350	800	2220	1150	1740	9500

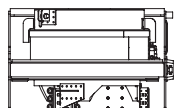
AUGER CLEANERS



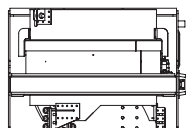
AC-550



AC-750



AC-950



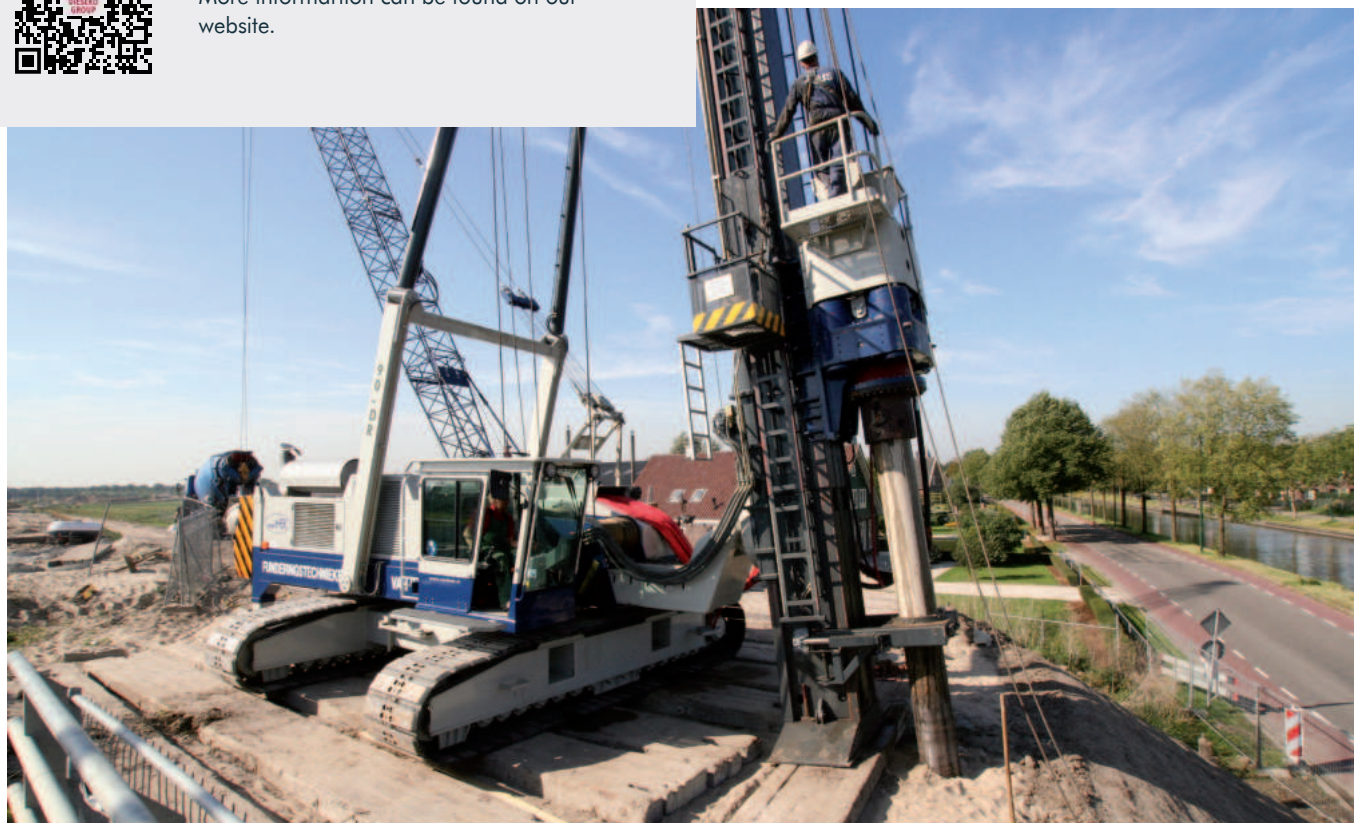
AC-1150

	Maximum drill diameter mm	Required oil flow l/min	Working pressure bar	Min. distance leader - center cleaner mm	Length mm	Width mm	Width mm	Weight indication kg
AC-550	550	100	200	500	1065	1215	900	1250
AC-750	750	100	200	600	1225	1300	900	1350
AC-950	950	100	200	750	1450	1550	1000	2000
AC-1150	1150	100	200	800	1600	1675	1200	2750



Rotary Heads

More information can be found on our website.





**PROUD
PROFESSIONALS**





Contact

Dieseko Group B.V.

(headquarters)

Lelystraat 49
3364 AH Sliedrecht,
the Netherlands
Tel: (+31) 184 410 333
info@diesekogroup.com
www.diesekogroup.com

Woltman Piling & Drilling Rigs

Ambachtsweg 16
3381 LN Giessenburg,
the Netherlands
Tel: (+31) 184-652044
info@woltmanrigs.com
www.woltmanrigs.com

PVE Equipment USA Inc.

5011 Vernon Road
Jacksonville, FL 32209, USA
Tel: (+1) 904 765 66 86
info@pveusa.com
www.pveusa.com

Pilequip Pty. Ltd.

39 Chapman Road
Vineyard NSW 2765, Australia
Tel: (+61) 2 9838 3144
info@pilequip.com.au
www.pilequip.com.au

Dieseko Polska

Spółka z o.o.
Struga 61
70-784 Szczecin, Poland
Tel: (+48) 736 241 696
polska@diesekogroup.com
www.diesekogroup.com

Dieseko Group certified dealer:

Shanghai ICE Construction

Equipment Trading Company

No.88, Building 31, ChuanSha
International Industrial Garden,
6999 ChuanSha Road,
PuDong District,
201202 Shanghai, P.R. China
Tel: (+86) 21 3468 8990
info@icevibro.com
www.icevibro.com



DIESEKO GROUP



WOLTMAN

